

MEDSTAR GEORGETOWN UNIVERSITY HOSPITAL

WASHINGTON , DC

CONSOLIDATED FURTHER PROCESSING PLANS

FURTHER PROCESSING APPLICATION TO THE
GEORGETOWN UNIVERSITY 2017-2036 CAMPUS PLAN

JUNE 7, 2017
ZONING COMMISSION CASE NO. 16-18A

APPLICANT
MEDSTAR GEORGETOWN UNIVERSITY HOSPITAL
ON BEHALF OF GEORGETOWN UNIVERSITY

DEVELOPER
TRAMMELL CROW COMPANY

ARCHITECT
HKS | SHALOM BARANES ASSOCIATES JV

CAMPUS PLANNER
DUMONT JANKS

TRAFFIC CONSULTANT
WELLS & ASSOCIATES

LANDSCAPE ARCHITECT
M. PAUL FRIEDBERG AND PARTNERS



DRAWING INDEX

No. Title:

--- COVER SHEET

1.0 SECTION 1 - DEVELOPMENTAL DATA
 1.1 DRAWING INDEX
 1.2 COURT CALCULATIONS
 1.3 ZONING TABULATION

2.0 SECTION 2 - CONTEXT
 2.1 SITE AERIAL
 2.2 SITE IMAGES
 2.3 EXISTING BIRDS EYE VIEWS
 2.4 SITE IMAGES

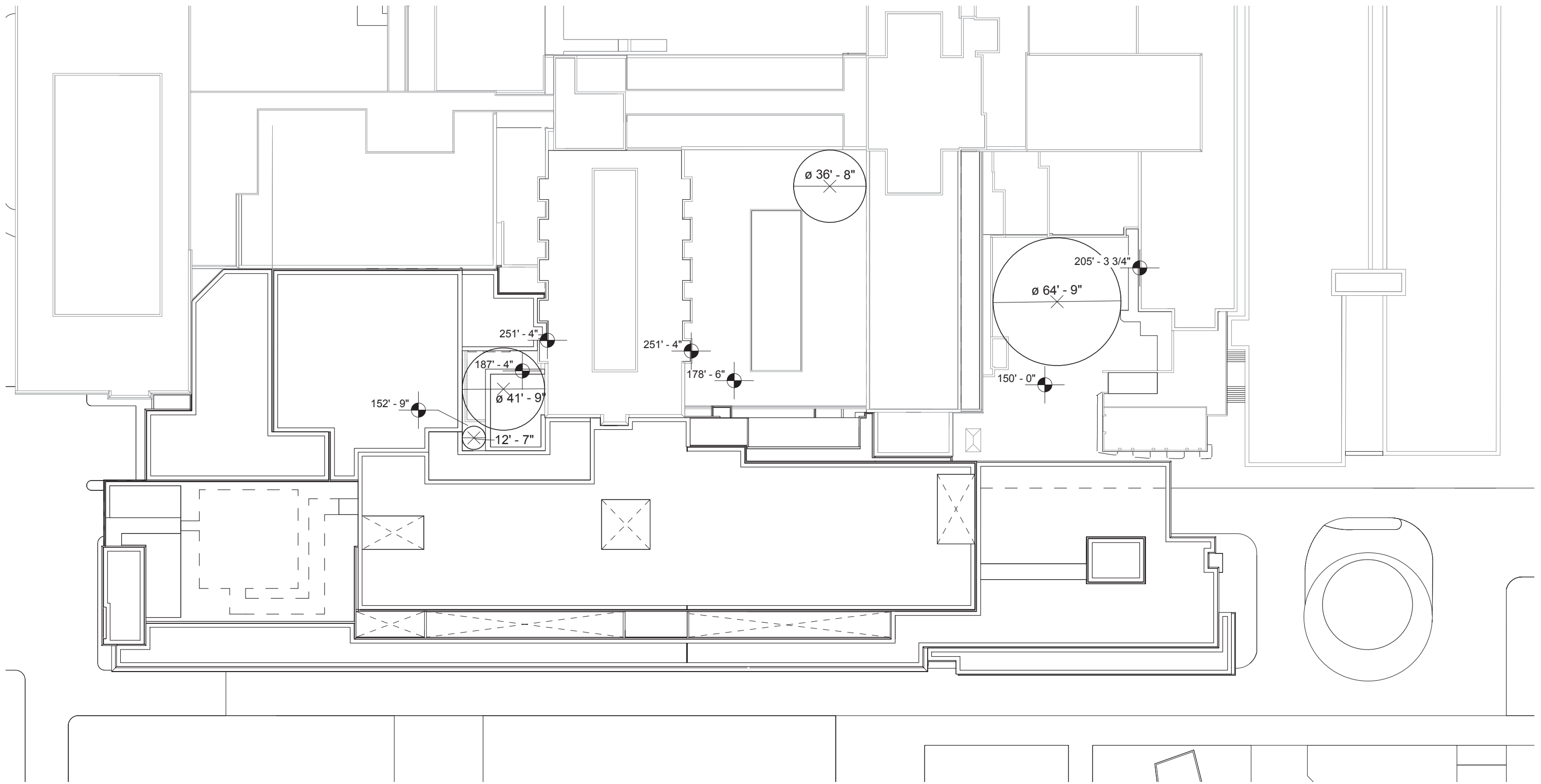
3.0 SECTION 3 - SITE CIRCULATION
 3.1 EXISTING SITE PLAN
 3.2 PROPOSED SITE PLAN
 3.3 EXISTING SITE CIRCULATION
 3.4 PROPOSED SITE CIRCULATION

4.0 SECTION 4 - FORECOURT / COURTYARD
 4.1 NORTH DISTRICT OVERALL PLAN - EXISTING
 4.2 NORTH DISTRICT OVERALL PLAN - PROPOSED
 4.3 STREET VIEW
 4.4 AERIAL VIEW
 4.5 STREET VIEW
 4.6 ENTRY PLAZA SECTIONS
 4.7 ENTRY PLAZA ELEVATION
 4.8 VIEW LOOKING SOUTH ST MARY'S COURTYARD - EXISTING
 4.9 VIEW LOOKING SOUTH ST MARY'S COURTYARD - PROPOSED
 4.10 VIEW LOOKING NORTH HENLE COURTYARD - EXISTING
 4.11 VIEW LOOKING NORTH HENLE COURTYARD - PROPOSED
 4.12 VIEW LOOKING NORTH DARNALL COURTYARD - EXISTING
 4.13 VIEW LOOKING NORTH DARNALL COURTYARD - PROPOSED
 4.14 CAMPUS MATERIAL PALETTES

5.0 SECTION 5 - SURGICAL PAVILION
 5.1 PERSPECTIVE VIEW - MASSING (AERIAL FROM NORTHEAST)
 5.2 PERSPECTIVE VIEWS - MASSING (NORTHEAST)
 5.3 PERSPECTIVE VIEWS - MASSING (NORTH & NORTHWEST)
 5.4 PERSPECTIVE VIEW - MASSING (SOUTHEAST)
 5.5 EAST ELEVATION
 5.6 NORTH ELEVATION
 5.7 EXTERIOR WALL MATERIALS
 5.8 WEST & SOUTH ELEVATIONS
 5.9 STACKED FLOOR PLAN DIAGRAM
 5.10 FLOOR PLANS (P3 - P1 LEVELS)
 5.11 FLOOR PLANS (GROUND - LEVEL 2)
 5.12 FLOOR PLANS (LEVEL 3 - PENTHOUSE)
 5.13 ENLARGED PLAN - PH LEVEL
 5.14 ENLARGED PENTHOUSE PLAN (HELIPAD)
 5.15 MECHANICAL PH PLAN
 5.16 CAMPUS GREEN SECTIONS
 5.17 PERSPECTIVE VIEW - MASSING (RELIEF)
 5.18 ENLARGED PLAN - PH LEVEL (RELIEF)

6.0 SECTION 6 - RETAINING WALL
 6.1 CONTEXT / TOPOGRAPHY PLAN
 6.2 EXISTING RETAINING WALL LOCATION PLAN
 6.3 PROPOSED RETAINING WALL LOCATION PLAN
 6.4 EXISTING RETAINING WALL HEIGHT DIAGRAM
 6.5 PROPOSED RETAINING WALL HEIGHT DIAGRAM
 6.6 EXISTING RETAINING WALL PLAN AND PROFILE
 6.7 PROPOSED RETAINING WALL CONCEPT PLAN AND PROFILE
 6.8 RETAINING WALL | SLOPE CUT COMPARATIVE DIAGRAM
 6.9 EXISTING CONDITIONS - PHOTO KEY PLAN
 6.10 EXISTING CONDITION PHOTOS
 6.11 EXISTING CONDITION PHOTOS
 6.12 PROPOSED RETAINING WALL RENDERING - VIEW LOOKING SOUTHEAST
 6.13 PROPOSED RETAINING WALL RENDERING - VIEW LOOKING NORTHWEST





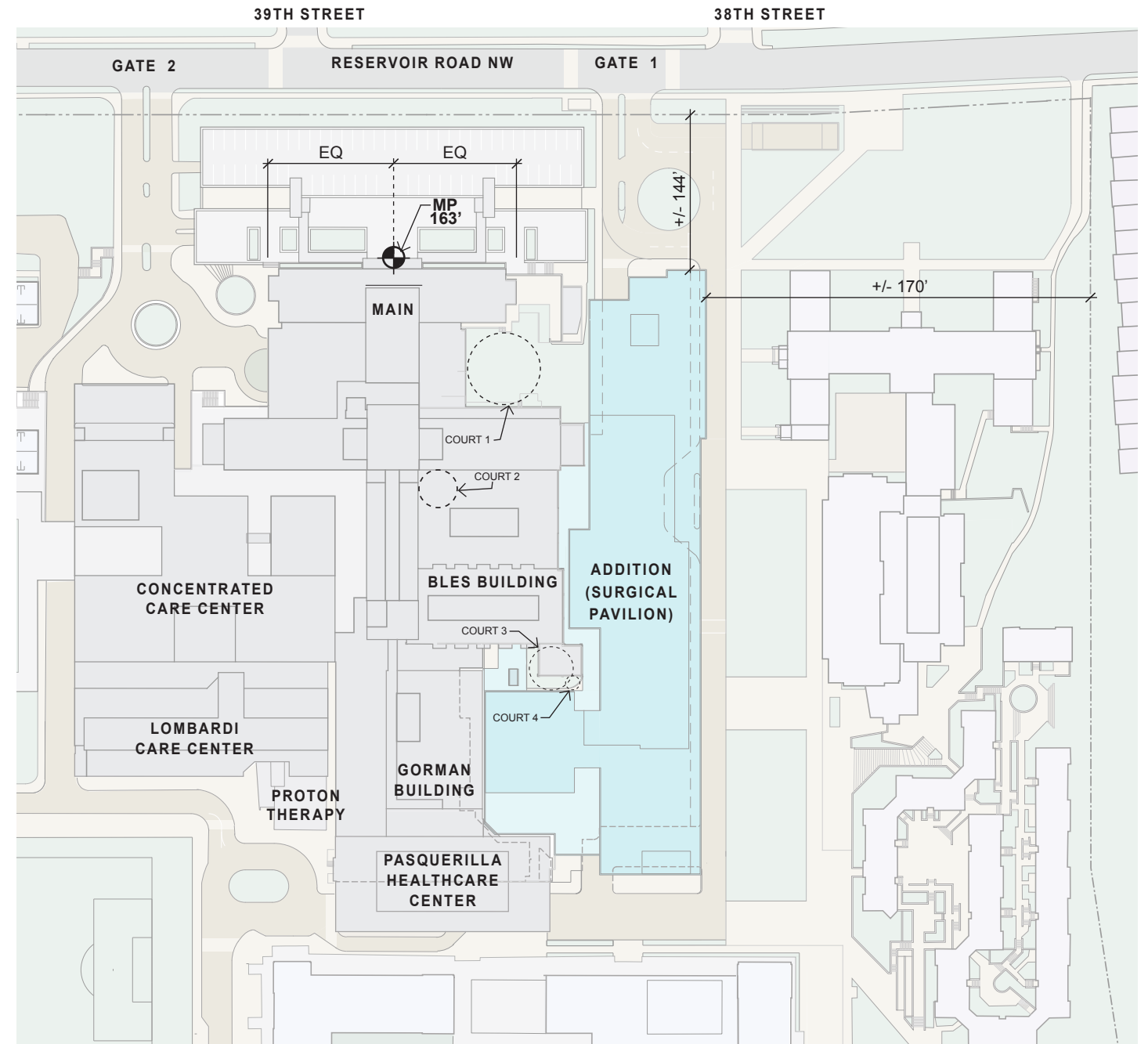
ZONING TABULATION

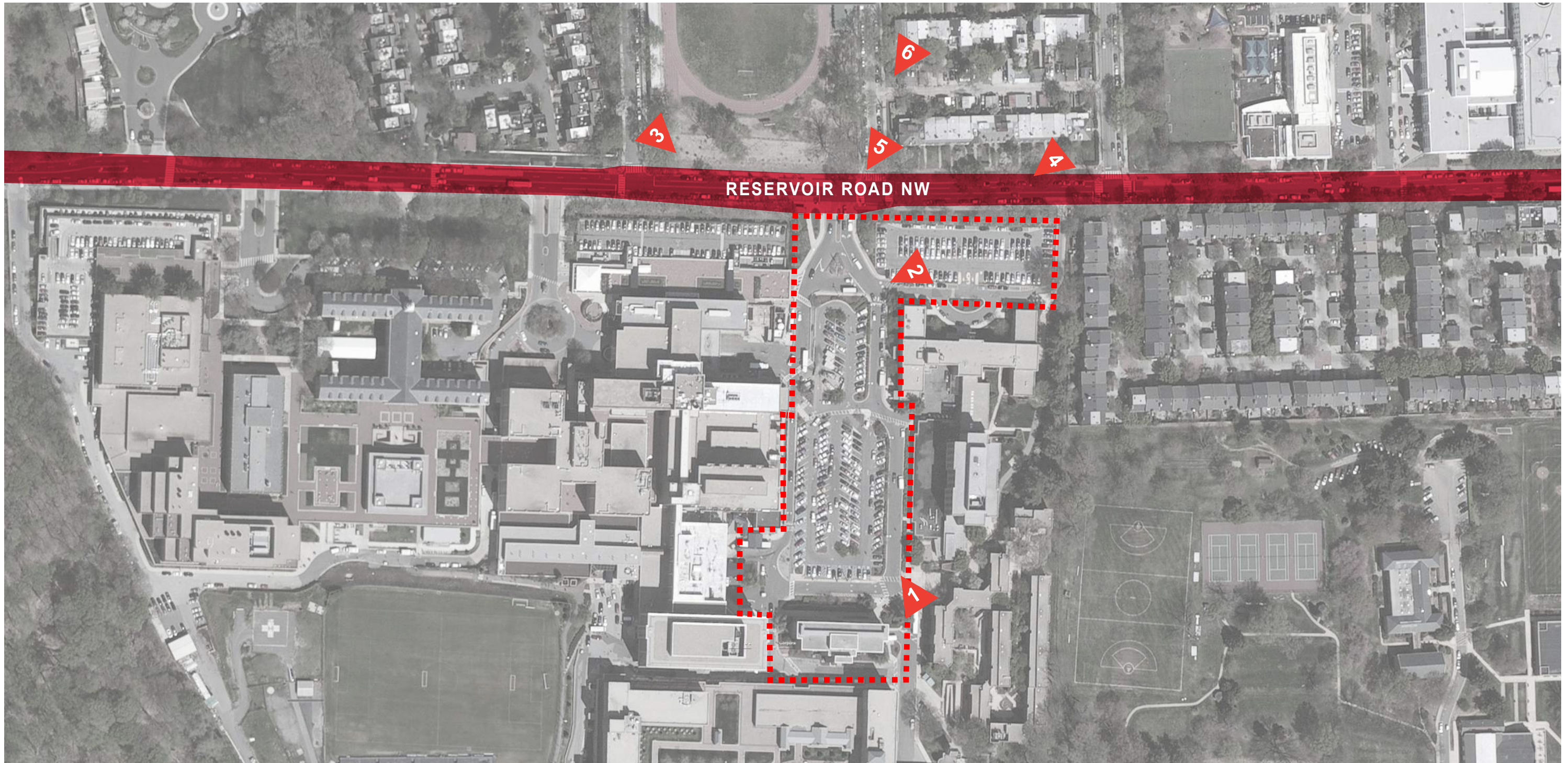
ZONING DISTRICT: R-3
SQUARE: 1321
LOTS: 824, 825, 826, 833

GROSS FLOOR AREA: 450,000 SF (MAXIMUM)
LOT OCCUPANCY: 90,000 SF (MAXIMUM)
HEIGHT: 90' (MAXIMUM) - Per the 1910 Height Act
STORIES: 6
PENTHOUSE HEIGHT: 18'-6" (MAXIMUM)
PENTHOUSE AREA: 31,000 SF (MAXIMUM)
PARKING: +/- 644 SPACES
LOADING: 3 BERTHS @ 12' x 55'
 2 BERTHS @ 12' x 30'
 5 DELIVERY SPACES @ 10' x 20'

COURTS:	COURT # (TYPE)	HEIGHT	WIDTH		AREA	
			MIN REQ'D	PROVIDED	MIN REQ'D	PROVIDED
	# 1 (OPEN)	55' - 3"	12' - 0"	64' - 9"	N/A	N/A
	# 2 (CLOSED)	72' - 10"	15' - 2"	36' - 8"	460 SF	9,400 SF
	# 3 (CLOSED)	64' - 0"	13' - 4"	41' - 9"	356 SF	2,153 SF
	# 4 (CLOSED)	34' - 7"	12' - 0"	12' - 7"	288 SF	946 SF

- NOTES:**
- ZONING TABULATIONS CONFORM TO THE GEORGETOWN UNIVERSITY 2017-2036 CAMPUS PLAN.
 - THE NUMBER OF PARKING SPACES IS WITHIN THE 2,700 SPACES ALLOCATED TO MGUH OF THE TOTAL 4,080 PARKING SPACES ON CAMPUS (NO CHANGE TO THE NUMBER OF SPACES ON CAMPUS IS PROPOSED).
 - PARKING SPACES WILL CONFORM WITH ZONING REQUIREMENTS:
 - STANDARD: 9' x 18'
 - COMPACT: 8' x 16'
 - BICYCLE: 2' x 6'
 - THE NUMBER OF COMPACT SPACES WILL NOT EXCEED ZONING MAXIMUM OF 40% OF THE TOTAL NUMBER OF SPACES PROVIDED.
 - DRIVE AISLES WILL BE 20' WIDE WHERE REQUIRED BY CODE.
 - BICYCLE PARKING SPACES WILL BE PROVIDED IN CONFORMANCE WITH ZONING, LEED CERTIFICATION, AND OTHER REGULATORY REQUIREMENTS.
 - LOADING BERTHS, PLATFORMS, AND SERVICE DELIVERY SPACES WILL CONFORM WITH ZONING REQUIREMENTS, AND BE LOCATED ON THE FIRST LEVEL BELOW GRADE.







1. VIEW FROM HENLE VILLAGE



2. VIEW FROM ST MARY'S HALL



3. VIEW FROM RESERVOIR RD & 39TH ST



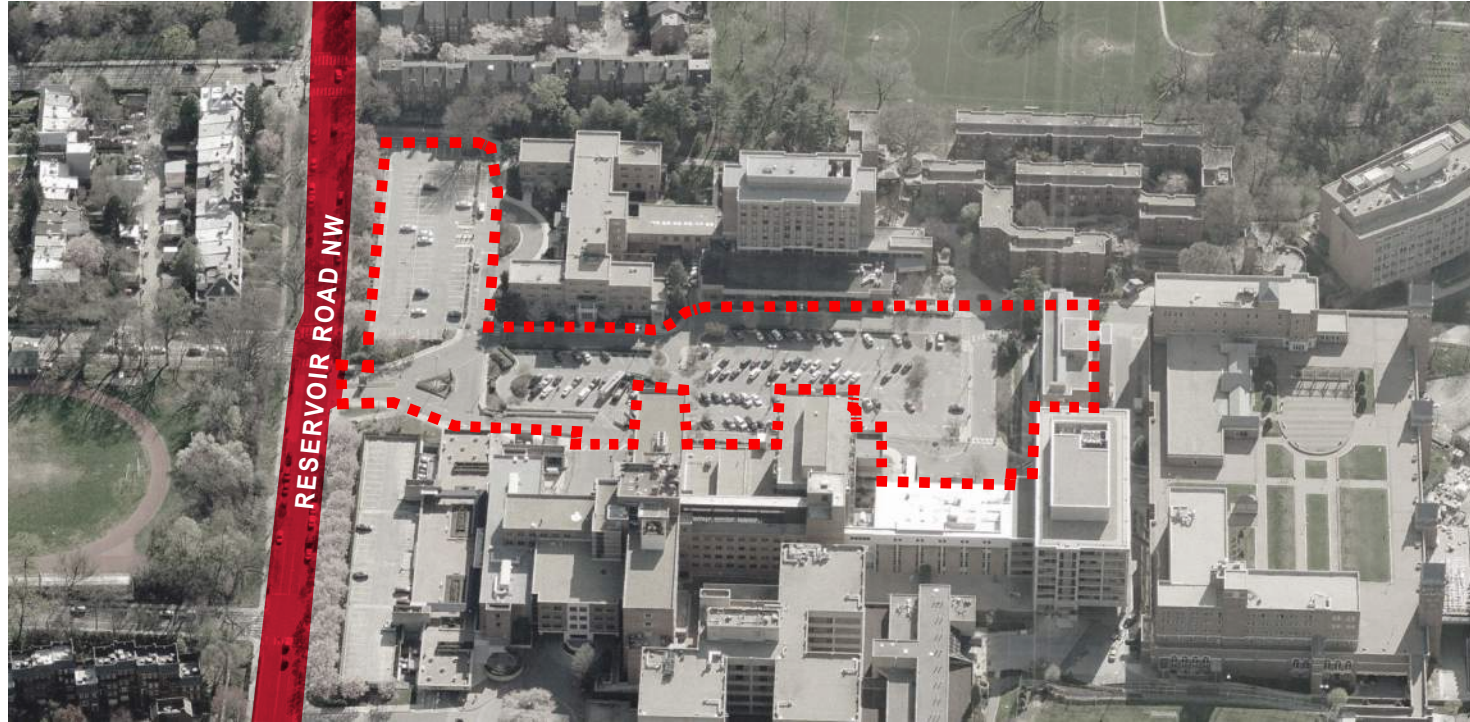
4. VIEW FROM RESERVOIR RD & 37TH ST



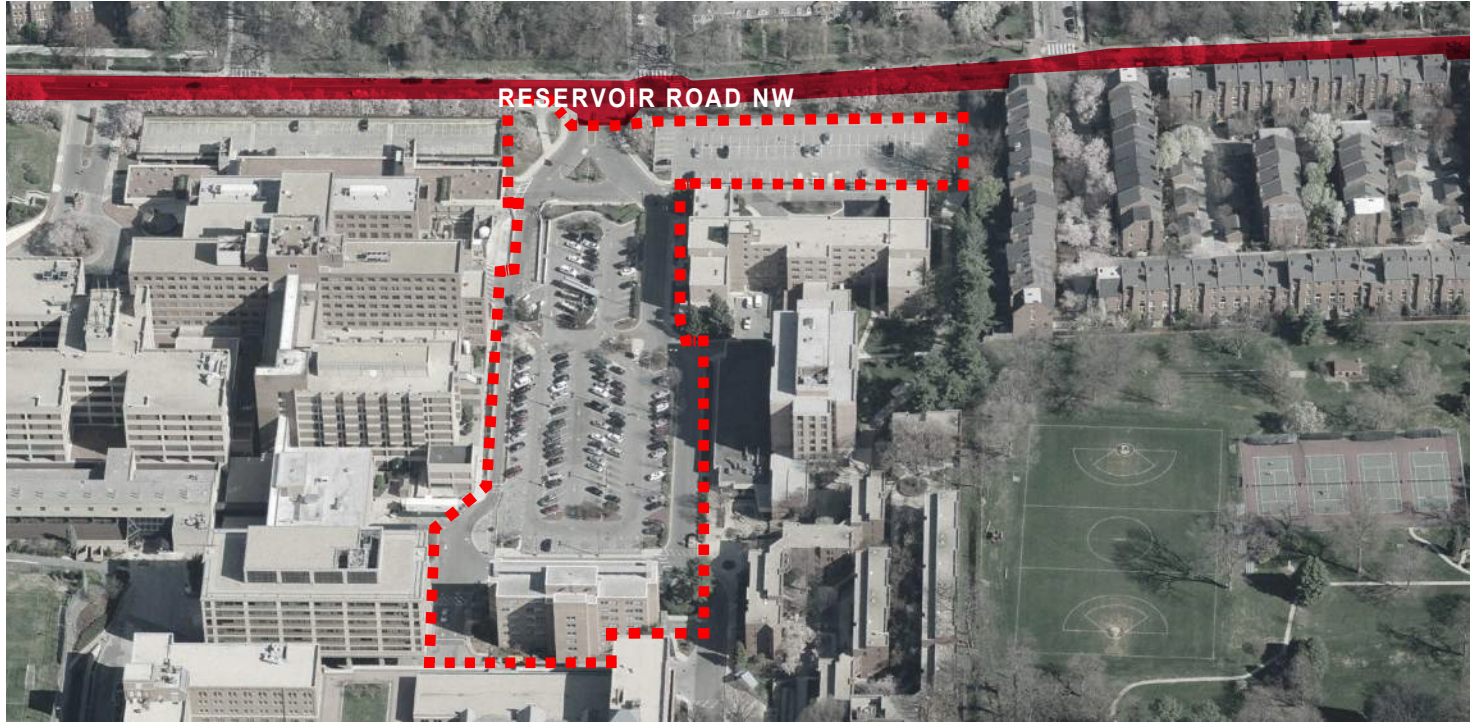
5. VIEW FROM RESERVOIR RD & 38TH ST



6. VIEW FROM 38TH ST



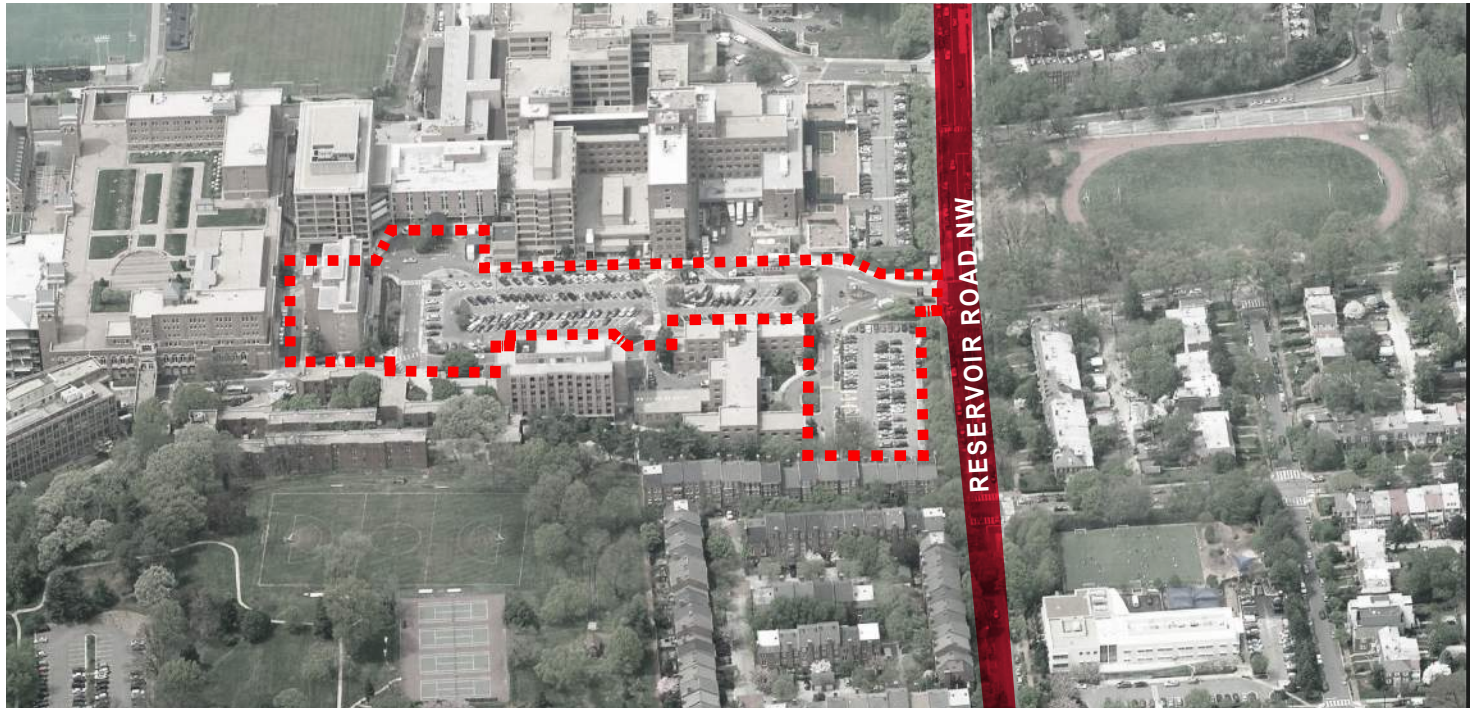
1. VIEW LOOKING EAST



2. VIEW LOOKING NORTH



3. VIEW LOOKING SOUTH



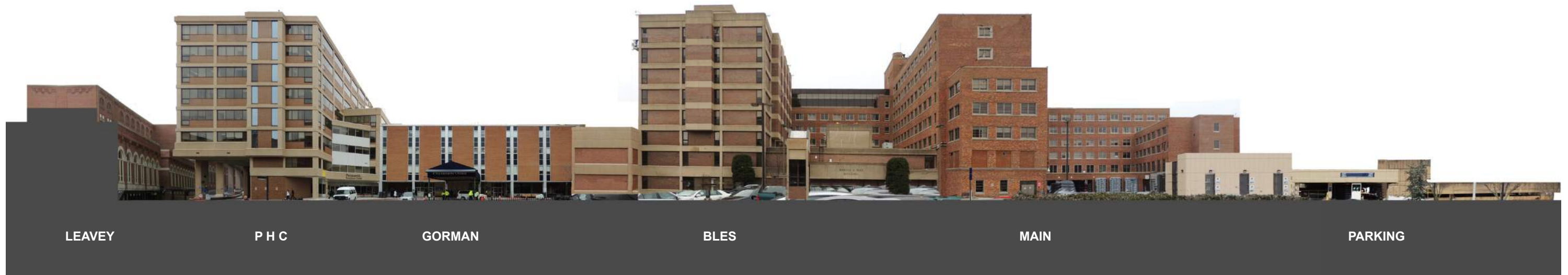
4. VIEW LOOKING WEST



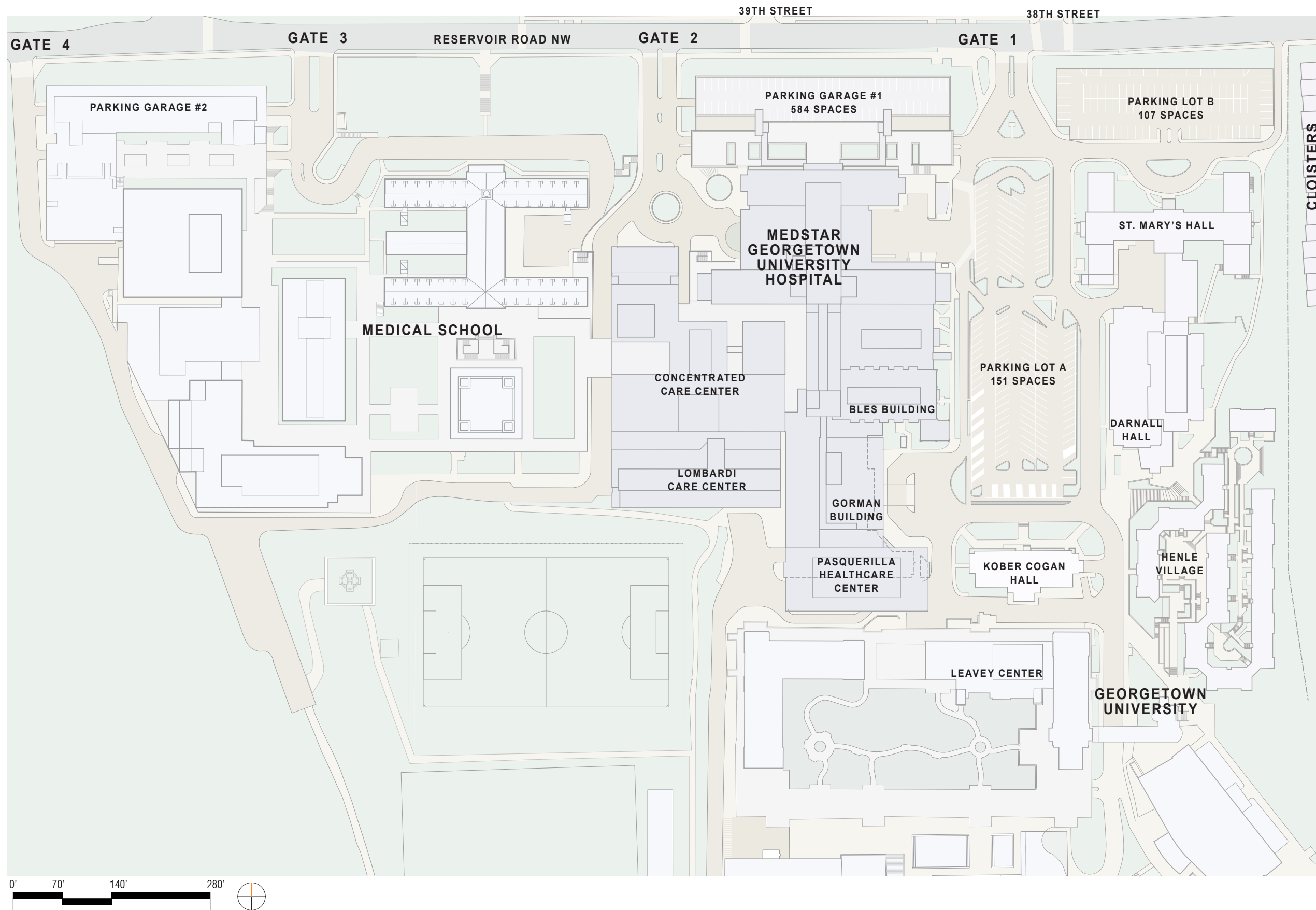
1. VIEW, LOOKING SOUTH

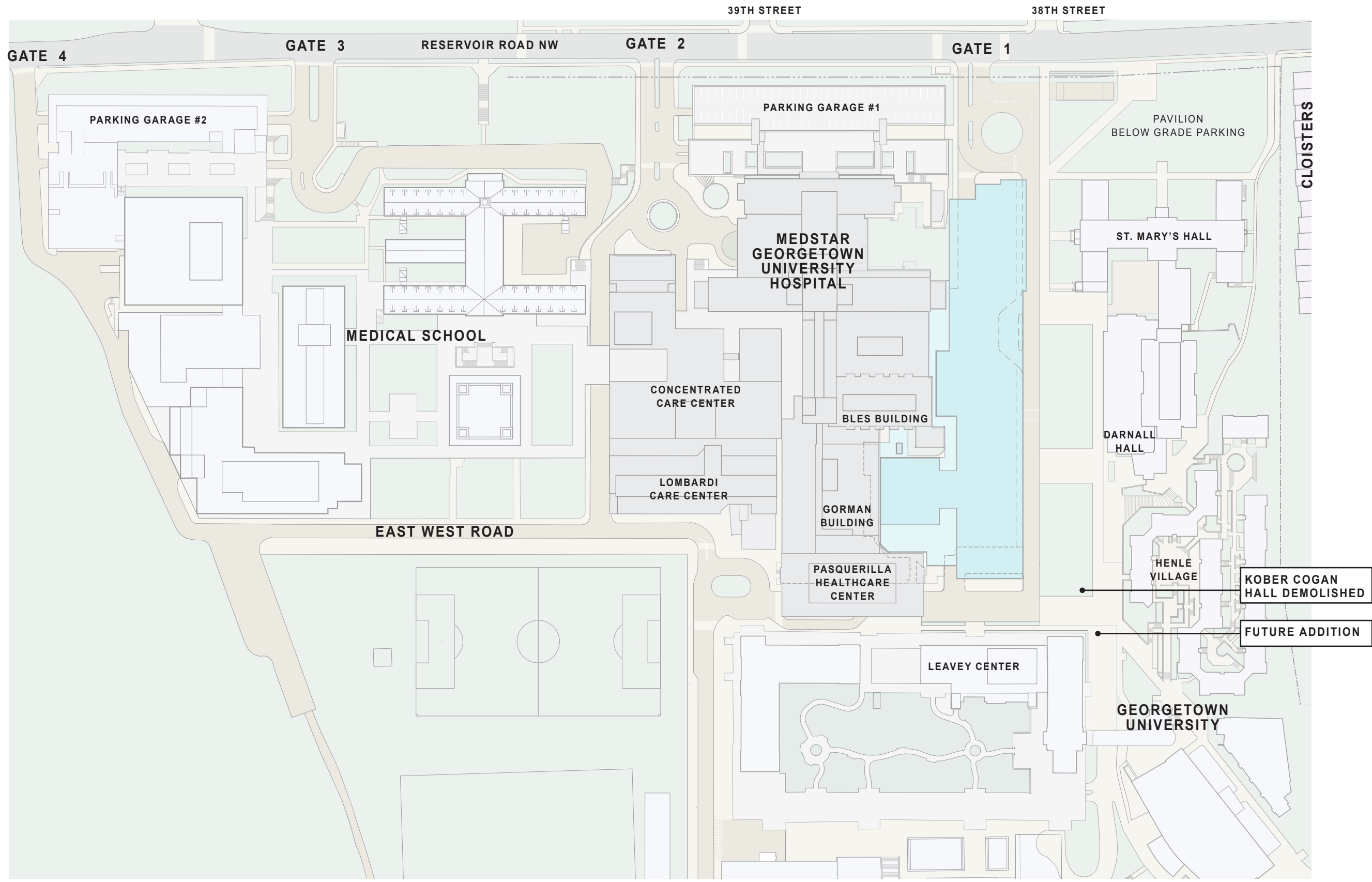


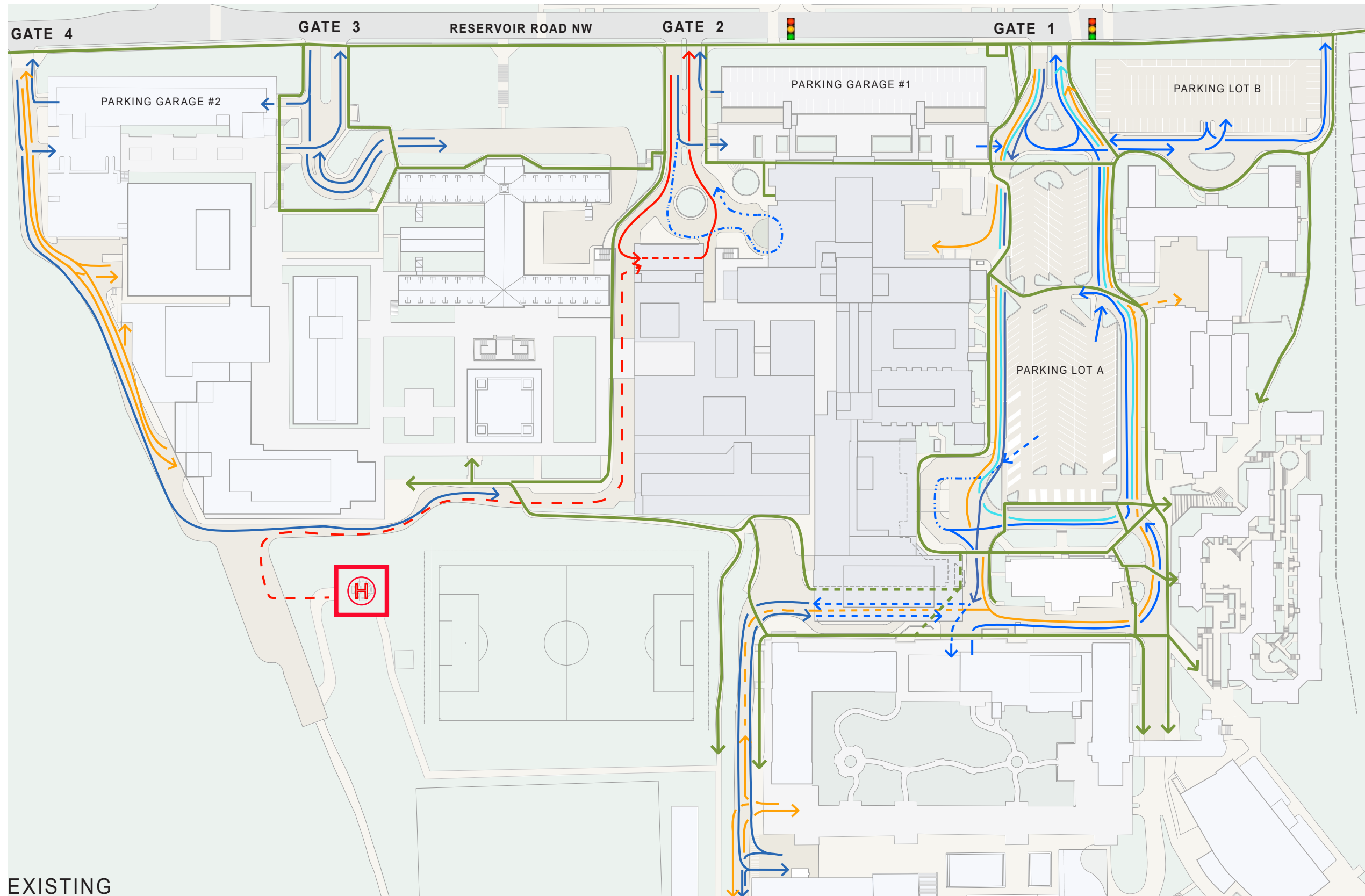
2. VIEW, LOOKING NORTH



3. VIEW, LOOKING WEST







EXISTING

PEDESTRIAN

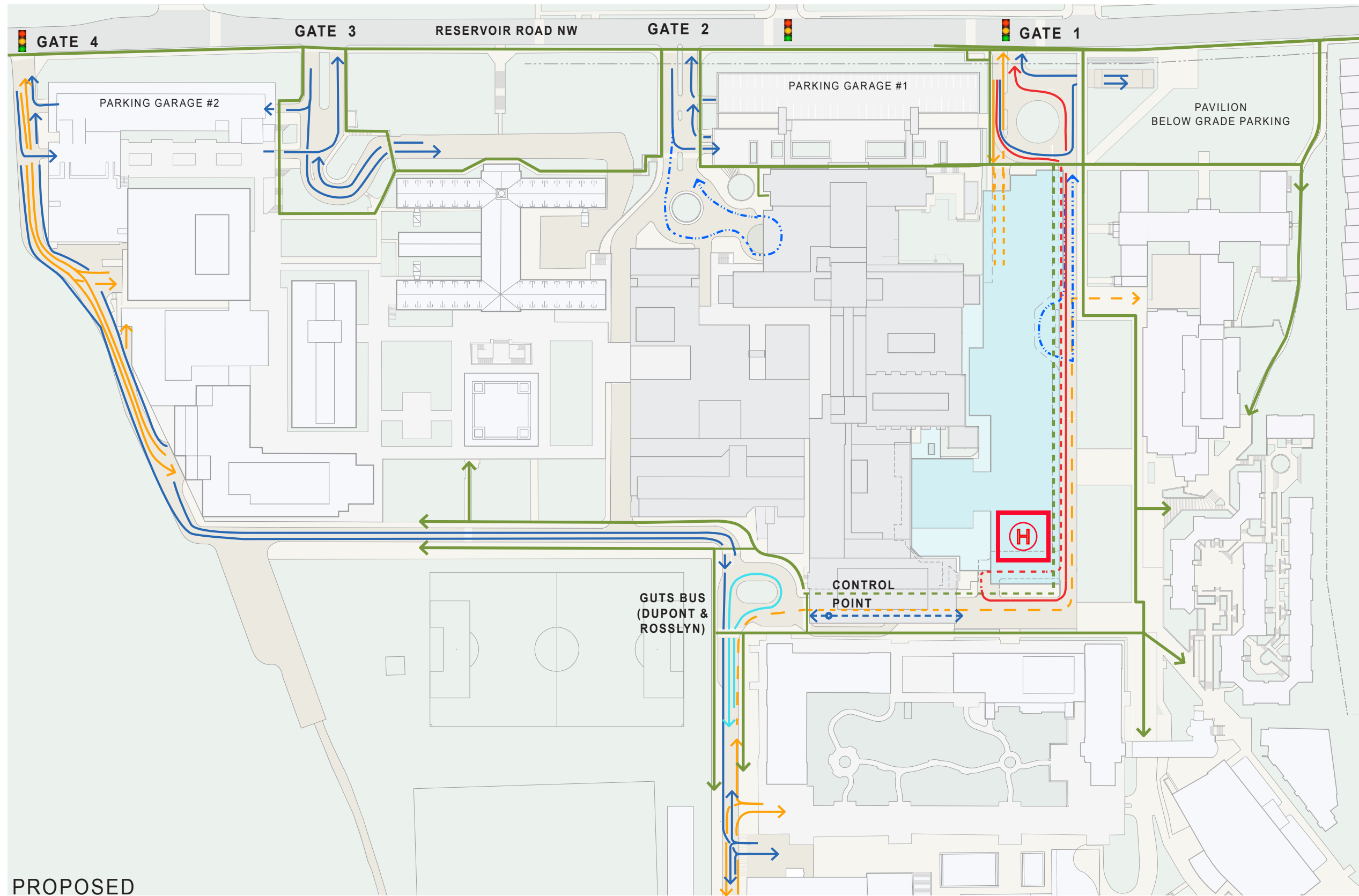
PARKING

DROP OFF

GUTS BUS

SERVICE

AMBULANCE



PROPOSED

PEDESTRIAN

PARKING

DROP OFF

GUTS BUS

SERVICE

AMBULANCE



IMAGE COURTESY OF GEORGETOWN UNIVERSITY AND DUMONT JANKS



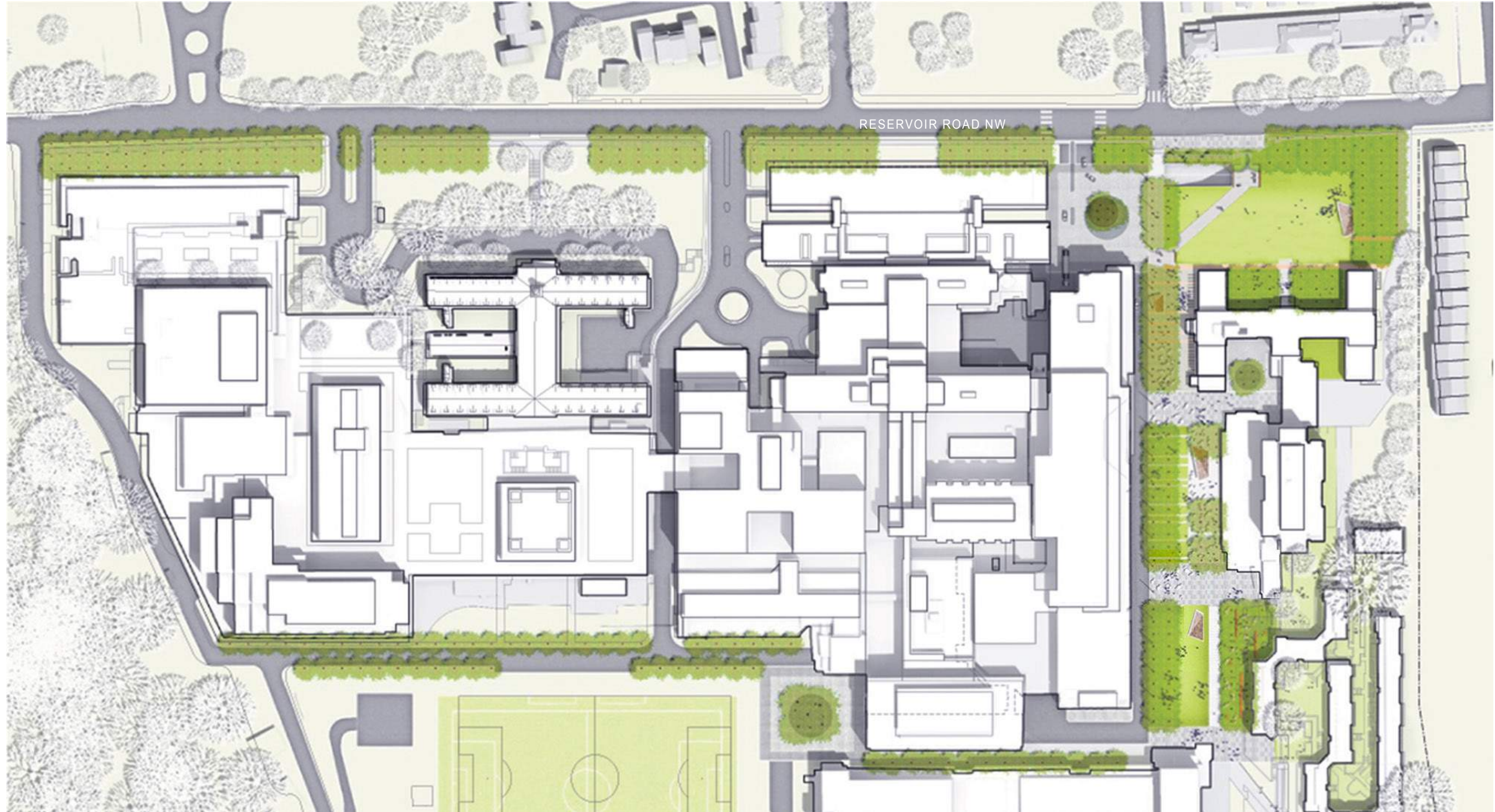


IMAGE COURTESY OF GEORGETOWN UNIVERSITY AND DUMONT JANKS





ENTRY PLAZA FROM RESERVOIR ROAD



ENTRY PLAZA AERIAL VIEW



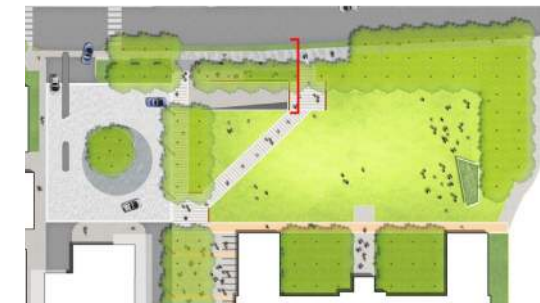
ENTRY PLAZA STREET VIEW



SECTION THROUGH LANDSCAPED TERRACES

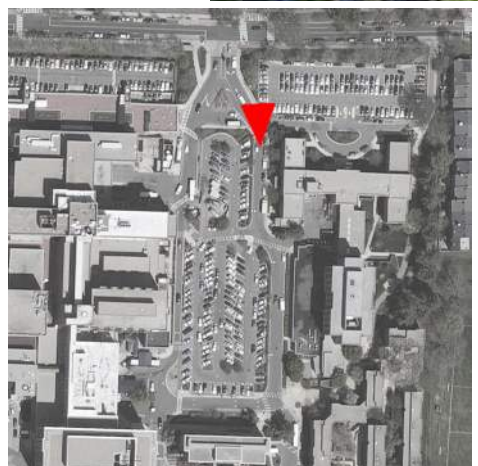


SECTION THROUGH PLAZA ENTRY





ENTRY PLAZA ELEVATION

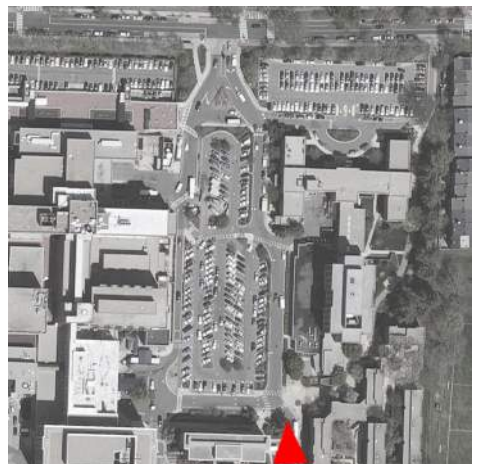


KEY PLAN

IMAGE COURTESY OF GEORGETOWN UNIVERSITY AND DUMONT JANKS



IMAGE COURTESY OF GEORGETOWN UNIVERSITY AND DUMONT JANKS

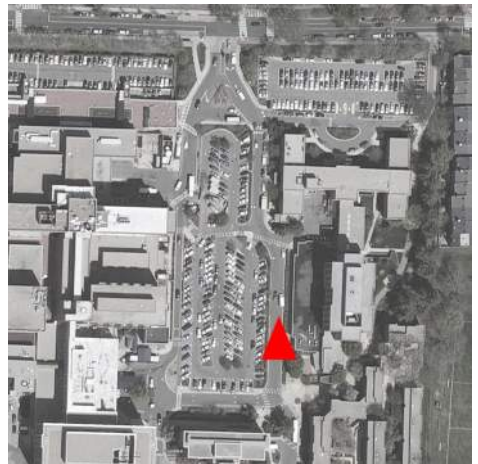


KEY PLAN

IMAGE COURTESY OF GEORGETOWN UNIVERSITY AND DUMONT JANKS



IMAGE COURTESY OF GEORGETOWN UNIVERSITY AND DUMONT JANKS



KEY PLAN

IMAGE COURTESY OF GEORGETOWN UNIVERSITY AND DUMONT JANKS

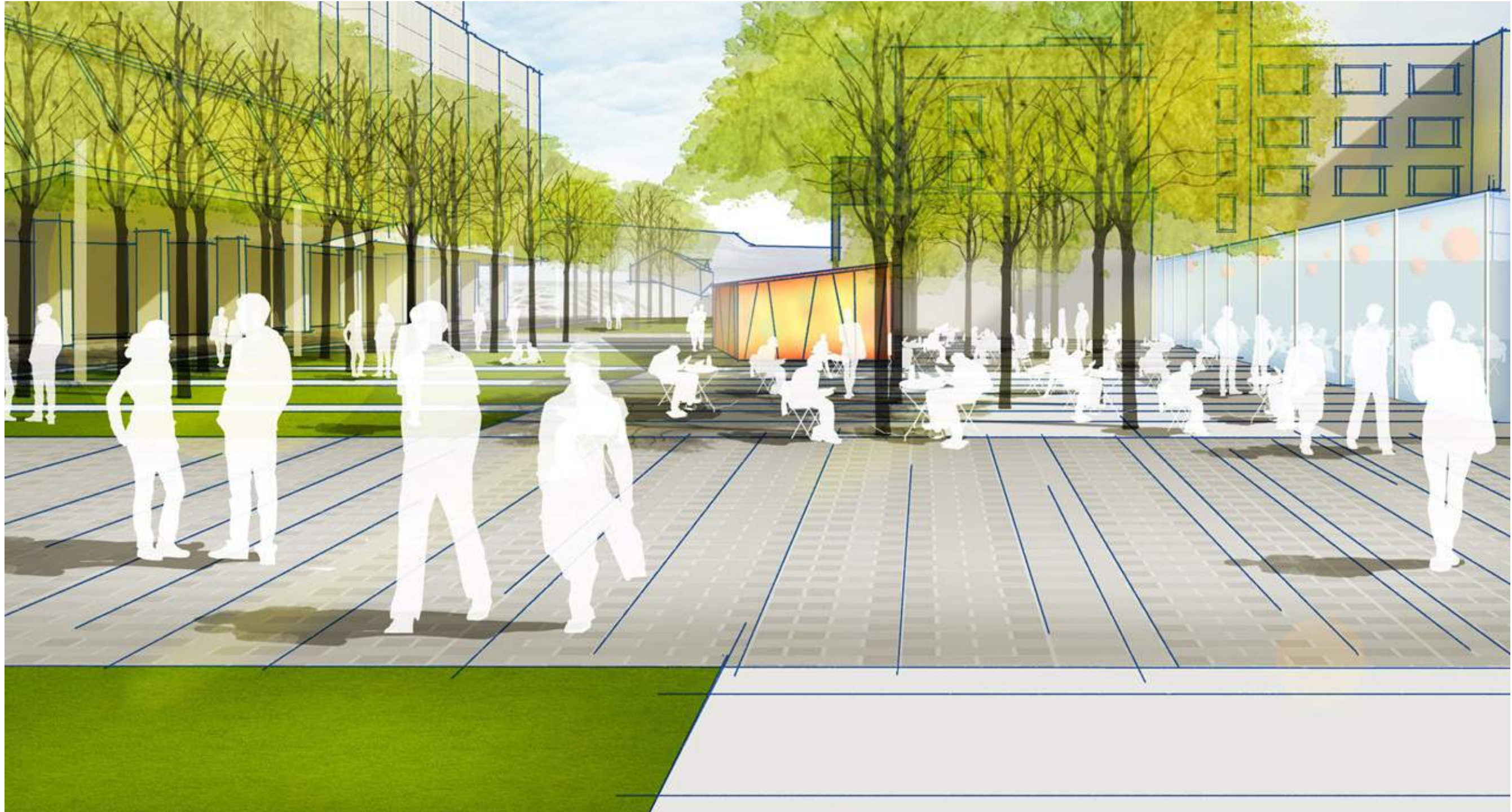


IMAGE COURTESY OF GEORGETOWN UNIVERSITY AND DUMONT JANKS

